

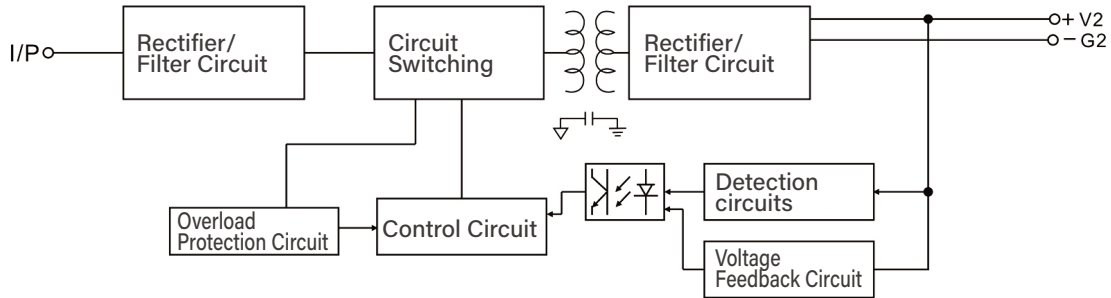
Features

- Wide input voltage range(AC100 - 400V)
- Overload, short-circuit, and over-voltage protection
- Natural Cooling
- Meets safety standards with a switching frequency of 40-60 kHz
- Full-load burn-in testy
- Constant voltage output mode with high voltage accuracy

Electrical Specifications

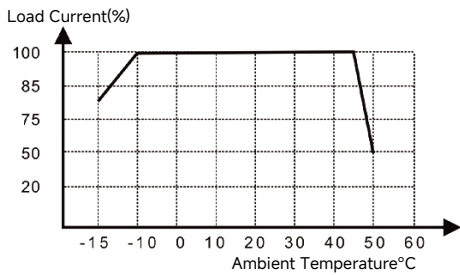
Specifications		TPS-H12SP-5V	TPS-H12SP-5V	TPS-H12SP-24V
Output	Output Voltage	5V	212V	24V
	Rated Current	1500mA	800mA	420mA
	Current Range	0-1500mA	0-830mA	0-420mA
	Ripple	<80 mVp-p	<120 mVp-p	<130mVp-p
	Voltage Accuracy	±1%	±1%	±1%
	Voltage Adjustment Rate	< ±1.5%	< ±1.5%	< ±1.5%
	Load Adjustment Rate	±1.2%	±1.2%	±1.2%
	Rated Power	7.5W	10W	10W
	Adjustable Voltage Range	4.95~5.1V	11.95-12.2	24-24.2
	Startup/Rise/Hold Time	50ms、 30ms、 30ms		
Input	Input Voltage Range	rated 100V~400VAC(max.90~430VAC)(DC127V~610VDC)		
	Input Current	0.15A~0.09A		
	Frequency Range	47Hz~63Hz		
	Efficiency(Determined by the input voltage)	>70%	>80%	>82%
	Inrush Current	COLD START <10A		
	Leakage Current	<0.5mA/220VAC		
Protection	Over-power Protection	130~150% of rated power, auto recovery after fault is removed		
	Over-voltage Protection	DC OUT >130%		
	Short-circuit Protection	Hiccup mode, auto-recovery after short is removed		
Environment	Operating Temperature and Humidity	-20°C~+35°C @100%LOAD,+50°C @60%LOAD: 20%-90%RH		
	Storage Temperature and Humidity	40°C~+105 10%-95%RH		
Safety and EMC	Standards			
	Withstand Voltage	I/P-O/P:3KVAC 1min.		
	Insulation Resistance	I/P-O/P:500VDC/100M Ohms		
Other	Dimensions (LxWxH)	66×30.5×20mm		
	Weight	33g		
Notes	<ol style="list-style-type: none"> 1. All parameters are measured at a rated input voltage of 220VAC, rated load, 25°C, and 70% humidity. 2. Accuracy includes setup error, voltage regulation, and load regulation. 3. Ripple measurement: Power supply and load are connected with 30cm twisted wires, with 0.1μF and 47μF capacitors at the load end, measured by a 20MHz oscilloscope. 4. Voltage adjustment rate is measured by changing the input voltage from low to high with rated load. 5. Load regulation is measured from 0% to 100% load. 6. Each output can deliver the maximum current, but the total load should not exceed the maximum rated power. 			

Block Diagram Frequency: 47~63Hz

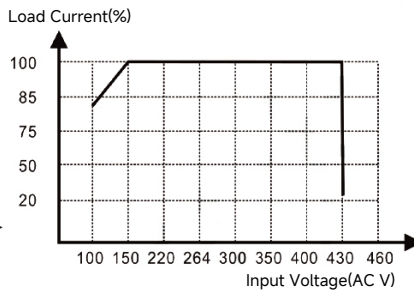


Full Voltage Efficiency Curve

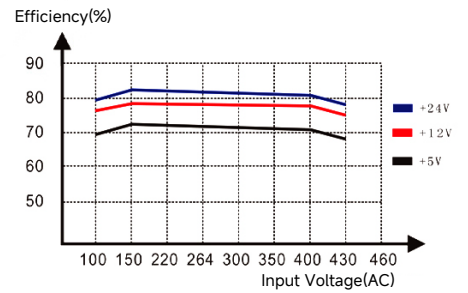
Ambient Temperature Derating Curve



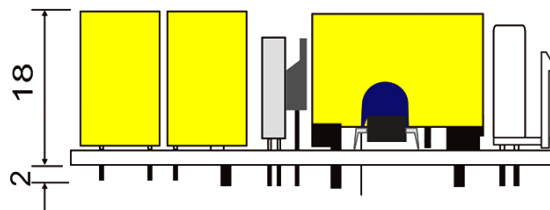
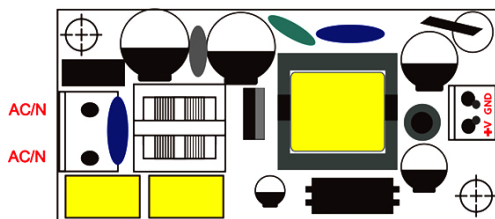
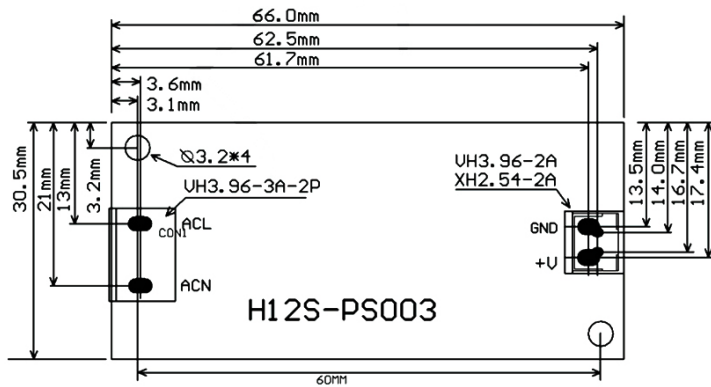
Load Current Derating Curve




Efficiency Percentage



Dimensions



 This electronic device must not be disposed of in the household waste at the end of its service life. For your return, there are free collection points for electrical appliances and, if necessary, additional points of acceptance for the reuse of the devices in your area. The addresses can be obtained from your city or communal administration. If the old electrical or electronic device contains personal data, you are responsible for deleting it before you return it. Further information: www.elektrogesetz.de